

DETAILS OF DAVEY RADIOS AND RADIOGRAMS MADE BY E.M.G. Designed by F.G.G.Davey

Sources:

- Publication: Audio Audio Jonathan Hill 1995
- Publication: Hi-Fi Year book. 1956 to 1964
- EMG advertisements in The Gramophone
- EMG advertisement leaflets and pamphlets.
- Printed EMG Lists
- EMG Letters

Please contact me for any new information, corrections and errors.

chunny@gramophonemuseum.com

DR 1 (1930)

DR 1 Receiver. (October 1930 first ad)

Review in the Gramophone Magazine (July 1931)

The E.M.G. D.R.1 Receiver. Price £25

Oak , Mahogany or Walnut

Specification. Mains Operated:—A.C. only.

Anode Bend Detector:—Mazda AC/HL Valve.

L.F. Stage:—Mazda AC/HL Valve.

Power Stage:—Marconi PXA Valve.

Mains Rectification Valve:—Mazda U U60/250.

Intervalve Couplings:—Resistance Capacity.

Output to Speaker:—Choke and Condenser.

2¾ watts

Provision for Pick-up

A regional receiving set, capable of taking the BBC stations at concert strength up to a distance of 50 miles and embodying a classically perfect resistance-capacity coupled amplifier for pick up purposes, giving 2 ¾ watts undistorted output. AC or DC

	1930	1932
Radio set alone	£20	£25
Set and playing desk	£37.10.0	£42
Complete radiogram	£50	

Now the Same Perfection in RADIO

that has made the E.M.G. acoustic gramophone famous!

The production of a worthy partner for the E.M.G. Gramophone has taken many months, but we now offer with confidence the first of our Radio Receivers, the DR 1, with the assurance that the QUALITY OF ITS REPRODUCTION is unapproachable. Musical quality has been our first and definite aim—and we have succeeded. A fully descriptive leaflet will be ready when this advertisement appears and we invite all who are using ordinary sets, and those who have hesitated, to write for a copy. Every DR 1 carries on the tradition of fine workmanship always associated with E.M.G. plus the technique of expert radio engineers whom we have engaged to make E.M.G. Radio as famous as our hand-made gramophones.

The DR 1 in Oak or Mahogany Cabinet £25



E.M.G. HAND-MADE GRAMOPHONES LTD.
11 Grape Street, London, W.C.2.

Behind the Princes Theatre.

Telephone: Temple Bar 6458.

DR 1 Radio-Gramophone (February 1932)

As above but with gramophone.

ADVERTISEMENTS [viii]

THE GRAMOPHONE

FEBRUARY 1932

The Davey Reproducer Series

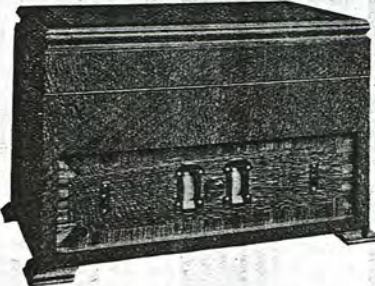
RADIO SETS, RADIO-GRAMOPHONES AND ELECTRICAL REPRODUCTION EQUIPMENT OF EVERY DESCRIPTION.

DR1: £25.
in Oak, Mahogany or Walnut



Designed for reception of the main British Broadcasting Stations with the best possible quality of reproduction and the utmost simplicity in operation. AC or DC at the same price. The ideal set for the man who wants to listen to MUSIC in broadcasting.

DR1 Radio-Gramophone
Oak, Mahogany or Walnut; £42



This Rad'o-Gramophone embodies the DR1 Receiving Set as shown above, and is fitted with the famous Davey Pick-up for use with fire needles. Electric motor to suit all voltages. The perfect reproduction and complete absence of record wear places this instrument in a class of its own. It must be heard to be believed.

Is designed by expert engineers and made at Grape Street under the control of Mr. H. B. Davey, designer of the famous E.M.G. HAND-MADE GRAMOPHONES

AND
THIS IS WHAT
USERS SAY ABOUT PERFORMANCE

"The balance of the reception was magnificent and entirely free from the bass boom which is so common with mass-production sets. The reception for the voice and for the piano is wonderfully true. On short-wave the wireless brings in an incredible number of stations."
— Jersey.

"The reception is clear and well balanced. The reproduction on gramophone simply marvellous."
— London.

"Quite the best radio set I have ever heard. You do not claim foreigners for this little set, but you would be surprised at the number I get, and get perfectly."
— Surrey.

The DR2 is the long-distance receiver with the patent Carpenter-Eckersley tuning circuit. It is made also as a Radio-Gramophone and represents the finest value it is possible to obtain. Send for further details.



RK Senior Loudspeaker in Hand-made Cabinet of the usual excellence of E.M.G. workmanship. Specially treated to overcome any trace of boom. £12.15.0. (Transformer where necessary, £1.2.6.)



Plain Baffles in Oak, Mahogany or Walnut, £2.15.0. Speaker to choice, at extra cost.

E.M.G. HAND-MADE GRAMOPHONES, Ltd., 11 Grape Street
(behind the Princes Theatre) London, W.C.2 Temple Bar 7166—7

It is generally admitted that it is a great deal more difficult to mass-produce radio than gramophones. You know the difference between E.M.G. Hand-made Gramophones and mass-produced products: there is an even greater difference in the case of individually-built radio and we invite you to write us with your problem. We can solve it economically, quickly and

DR 2

A medium distance getting receiver with one screened grid valve, 3 ganged tuned circuits and the highly selective Carpenter - Eckersley tuning device. Amplifier similar to DR 1 but 6 watts undistorted output.

Receiving set only	£30
Set and playing desk	£47.10.0
Complete radiogram	£60

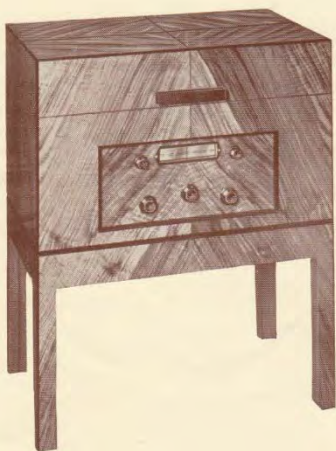
The ad below from June 1932. The DR2 on the next page looks very different.

The DR2 £42. Loudspeaker extra.
In Oak, Walnut or
Mahogany cabinet

*Sets and
Equipment
for every
purpose
from
Flats to
Aerodromes*



E.M.G. HAND - MADE GRAMOPHONES Ltd.
11 GRAPE STREET (behind the Princes Theatre)
LONDON, W.C.2 Telephone : Temple Bar 7166-7



D.R.2 Radio Receiving Set £39:0:0
D.R.2 Radio-Gramophone £53:10:0
for operation on Alternating Current
Complete with Loudspeaker in
Standard Baffle.

For use with Direct Current an alternator
is essential

Installation at cost of time, material and
travelling expenses

Davey Radio— *The DR2*

The D.R.2 Radio Set is a "straight" set, comprising one high frequency valve, in conjunction with three ganged tuned circuits, a most carefully designed detector, a low frequency amplifier valve, and a power output valve capable of 6 watts undistorted output. The smoothing provided is so completely adequate that "hum" has been reduced to the point of disappearance.

The high frequency side of the set is capable of providing the programmes from the main B.B.C. stations serving any district and if a good aerial is available, a considerable number of foreign stations will usually be available as well. The selectivity is adequate to this purpose, without cutting "top." Variable "top" cut is provided for heterodyne whistles, etc. The power output is adequate for all ordinary domestic purposes.

The low-frequency side comprises a 3-stage resistance-coupled amplifier, terminating in a power triode giving 6 watts undistorted output.

Cabinet dimensions D.R.2 and D.R.2.G. (radio-gramophone combination), 32in. high, 16in. back to front. Loudspeaker 26in. square, 12in. back to front.

The D.P.2 Pick-up supplied with this instrument is of our own design. It is the result of years of research and we believe that it produces the most even response so far achieved. A pleasing factor in its performance is the complete absence of peaks of any kind. This enables the higher frequencies to be reproduced without any aggravation of scratch from the record surface. The scratch being perfectly spread and not gathered into peaks, is unobtrusive to an extent that is astonishing to those who are used to associating an absence of scratch with a heavy top cut.

The loudspeaker supplied, which is fitted in a baffle separate from the set and Pick-up, for a variety of very good reasons, is a moving coil loudspeaker made specially for us. We have tested all makes of speakers and consider this type to be the best obtainable at present.

We fit the loudspeaker into a separate baffle for the following reasons:—

(a) It becomes possible to have the set and pick-up by the armchair and the loudspeaker some distance away, which is an obvious advantage.

(b) A speaker in a separate baffle is definitely capable of better reproduction, especially in the bass, than a speaker in any kind of cabinet capable of holding the rest of the instruments as well.

(c) The valves and other delicate parts of the instrument are not subjected to continued violent vibrations.

Finally it can be said that all our instruments are made by hand from the best of components and materials. No pains are spared to ensure their reliability and they are tested and tuned exhaustively to ensure that each example shall give the highest possible quality. There is no question of this particular example or that being an especially good one. All must be perfect or they are not allowed to leave our works.



Standard Baffle for

D.R.2, D.R.5. and D.R.6.

Cabinet Baffle on Legs £4:10:0 extra.

DR 3 (1935-1938)

A long distance getting receiver with two screened grid valves, and four tuned circuits under Carpenter/Eckersley patents, Very sensitive selection with amplifier giving 5 watts undistorted output.

Radio set alone	£40
With playing desk	£65
Complete radiogram	£77.10.0

DR 4 (1939)

Electric reproducer with DP2 pick-up. 7 watt amplifier with stool and separate loudspeaker

£39.10.0

(April 1947 price list- With single turntable £98 + £24.10.0 Tax= £122.10.0)

(April 1947 price list- With twin turntables £133 + £33. 5.0 Tax= £166.5.0)



DR 4
ELECTRICAL REPRODUCER

The D.R.4, which includes a light-weight pick-up, a 7 watt amplifier, and a high quality loud-speaker on separate baffle, offers electrical reproduction of magnificent and always satisfying quality. In common with all our instruments, it is made by craftsmen who take a great pride in maintaining the exacting standards which we have set ourselves. Before being passed for sale, each instrument is tested by experts whose knowledge of the technique of electrical reproduction, and whose critical hearing enables them to correct the slightest imperfection of tone and balance.



DR4 for use with alternating current complete with stool for amplifier cabinet, and with loud-speaker on separate baffle. (This model is available with twin turntables). The dimensions of the Amplifier Cabinet are 16 1/2" back to front, 26 1/2" wide, 16" high (32" on stool).

DR 4a

Similar but with double turntables for automatic couplings

With single lid but no interior light £50

Walnut case, with twin glass lids £58.10.0

DR 5 (1938)

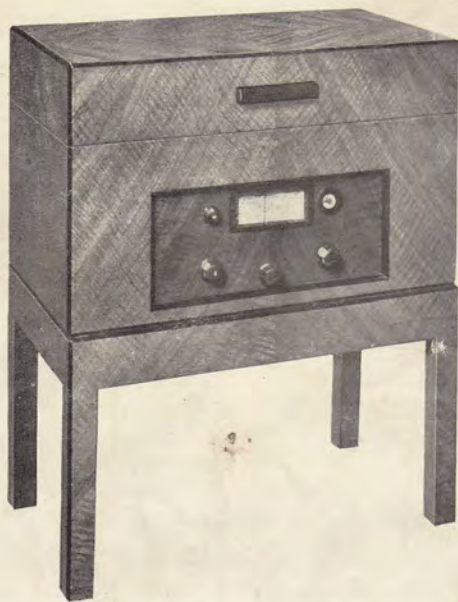
Six valve (plus one mains rectifier) straight receiver having two high frequency amplifying valves with four tuned circuits, highly amplifies automatic gain control and visual tuning indicator. 3 stage audio frequency amplifier resistance coupled with a heavily back-reacted beam tetrode giving 7 watt undistorted output.

Radio alone £46

(April 1947 price list- £98 + £24.10.0 Tax= £122.10.0)

Davey Radio

The DR 5



In designing the D.R.5 receiver, which is incorporated in the D.R.5 Radio-gramophone, we set out to make at once the finest and the most generally useful "straight" high quality receiver that modern methods make possible. By taking advantage of recent developments in components, and by taking the further step of manufacturing our own chokes and coils, we have been able to produce a set that fully realises our aim.

In quality of reproduction the D.R.5 has no superior, and it is capable of exploiting to the full the very best of wireless transmissions and gramophone records. In selectivity and distance getting it cannot, of course, compete with the more ambitious superheterodynes, but it handles so agreeably and simply when searching for foreign stations, and can bring in and separate so considerable a number of them, that, regarded as a distance getter alone, we consider it to be the equal of most of the smaller superheterodynes on the market.

A new and extremely powerful fading compensator of our own design has enabled us to dispense with a hand-operated sensitivity control; and a visual tuning device, together with a large dial clearly marked with station names, facilitates dead central tuning.

The D.R.5 is also available as a receiver only.

Cabinet dimensions DR5 Radio-gramophone 26" wide, 32" high, 16" back to front.
Loud-speaker 26" square, 12" back to front.

DR 5a

As DR5 but Radiogram £62.10.0

(April 1947 price list- With single turntable £128 + £32 Tax= £160)

(April 1947 price list- With twin turntables £163 + £40.15.0 Tax= £203.15.0)

Davey Radio—The DR5

In designing the D.R.5 receiver we set out to make at once the finest and the most generally useful "straight" high quality receiver that modern methods make possible. By taking advantage of recent developments in components, and by taking the further step of manufacturing our own chokes and coils, we have been able to produce a set that fully realises our aim.

In quality of reproduction the D.R.5 has no superior, and it is capable of exploiting to the full the very best of wireless transmissions and gramophone records. In selectivity and distance getting it cannot, of course, compete with the more ambitious superheterodynes such as our own D.R.6, but it handles so agreeably and simply when searching for foreign stations, and can bring in and separate so considerable a number of them, that, regarded as a distance getter alone, we consider it to be the equal of most of the smaller superheterodynes on the market.

A new and extremely powerful fading compensator of our own design has enabled us to dispense with a hand-operated sensitivity control, and a visual tuning device, together with a large dial clearly marked with station names, facilitates dead central tuning.

Technical Specification

A 6-valve (plus one mains rectifier) "straight" receiver having two high frequency amplifying valves, with four tuned circuits, highly amplified automatic gain control and visual tuning indicator. 3-stage audio-frequency amplifier resistance-coupled, with a heavily back-reacted beam power tetrode giving 7 watts undistorted output.



D.R.5 Radio Receiving Set £48 : 0 : 0

D.R.5 Radio-Gramophone £62 : 10 : 0

for operation on Alternating Current complete with Loudspeaker in Standard Baffle as illustrated opposite.

for use with Direct Current an alternator is essential.

Installation at cost of time, material and travelling expenses.

DR 6 (1st Ad.March 1938)

An 8 valve plus two mains rectifiers, high quality super heterodyne receiver incorporating a pre-amplifier with 3 signal frequency tuned circuits ; two I.F. amplifiers with three 110 K.C. couplers specially damped, diode-triode detection, visual tuning indicator, amplified automatic gain control working on four valves. Three stage audio-frequency amplifier resistance coupled, with a heavily back reacted beam power tetrode giving seven watts undistorted output. On the " local" side the I.F. circuit is reduced to one damped coupler.

Radio only £66.10.0

Radiogram £78.10.0

Davey Radio—The DR6 — for distant recep

In the design of all our instruments, acoustic or electric, our principal aim is to achieve the highest possible quality of reproduction. As far as Davey Radio is concerned, we have preferred to make sets capable of receiving a limited number of stations really well, rather than sets that would receive innumerable stations at a quality below the standard that we consider to be musically satisfactory.

Owing to this policy we have confined ourselves for many years to the "straight" type of circuit, judging the advantages of the superheterodyne system in increased selectivity and sensitivity, and compensation of fading, to be more than counter-balanced by the faults common to sets built on that principle.

We realised, however, that there was a need for a high quality long range set, and for over a year we have been experimenting to discover to what extent these disadvantages—distortion, and the production of parasitic noises—were inherent in the superheterodyne circuit, and to what extent they could be eliminated by more careful detail, design and construction than is normally employed.

As a result of our research we found that by taking advantage of recent advances in valve design we could overcome some types of distortion. At the same time it also became clear to us that we could not build a receiver worthy to bear our name unless certain other components could be provided, having exactly the electrical values called for by our circuits, together with a considerably higher order of constancy than was offered by any source of supply that we knew.

To overcome this difficulty we are now manufacturing our own coils, chokes and switches. This undertaking has been completely successful, and has enabled us to produce in the D.R.6 a receiver that is in every way a worthy and notable addition to our range of sets.

The D.R.6, a superheterodyne receiver employing 8 valves (plus two mains rectifiers), is fully equal in selectivity and sensitivity to the largest sets made. When receiving distant stations it offers a quality of reception that is as good as is allowed by the prevailing conditions of reception and the reduced high-note response that is mathematically inseparable from high selectivity.

High selectivity, which is essential for the reception of distant stations, is not necessary for stations coming in at good strength and from no great distance: it is in fact a disadvantage, owing to the reduced high-note response. To deal with this point and to achieve the very finest results from local stations, we have provided the D.R.6 with a local/distant switch. The function of this most important feature is to cut out the numerous intermediate tuned circuits and amplifying valves, leaving in operation a simple set of moderate selectivity, capable of a quality of reproduction indistinguishable from that which has won the commendation of discerning critics for our "straight" sets.

The owner of a D.R.6 is thus able to enjoy the finest possible reception of stations both on any night he will have the widest selection of programmes, all at a *reception of time*, efficiently to give pleasure to the critical listener.

The D.R.6 is very simple and convenient in operation, and its large dial, clearly marked with station names, together with a visual tuning indicator, facilitates dead central tuning. As with all our receivers, the loud-speaker is supplied in a separate baffle, so that it can be placed in a convenient position at the other side of the room while the user has the set at his elbow, able to control it from his arm-chair.

The gramophone side of the D.R.6 is identical with that of the D.R.5.

Technical Specification

An 8-valve (plus two mains-rectifiers) high quality superheterodyne receiver incorporating a pre-amplifier, with three signal-frequency tuned circuits; two I.F. amplifiers with three 110 K.C. couplers specially damped, diode-triode detection, visual tuning indicator, amplified automatic gain control working on 4 valves. Three-stage audio-frequency amplifier resistance-coupled, with a heavily back-reacted beam power tetrode giving seven watts undistorted output. On "local" side the I.F. circuit is reduced to one damped coupler.

D.R.6 Radio Receiving Set £66 : 10 : 0

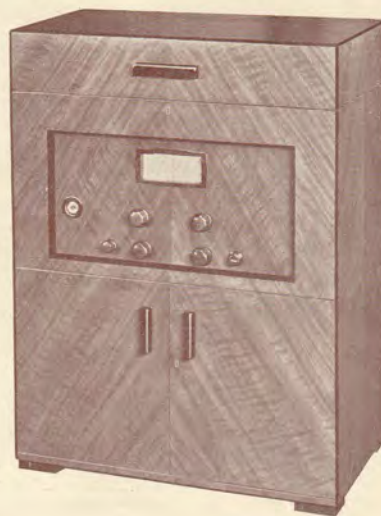
D.R.6 Radio-Gramophone £78 : 10 : 0

for operation on Alternating Current complete with Loudspeaker in Standard Baffle, as illustrated for the D.R.2.

For use with Direct Current an alternator is essential.

Cabinet dimensions D.R.6 Radio-gramophone 35in. high, 26in. wide, 16in. back to front.

Installation at cost of time, material and travelling expenses.



The right-hand bottom compartment is arranged to take about 75 twelve- or ten-inch records, stored vertically in envelopes. Albums may be used. The left-hand door does not open.

DR 7 (1st Ad. June 1939)

Electric reproducer with DP2 pick-up

4 watt amplifier with separate loudspeaker £25

Walnut stool £2.10.0

(April 1947 price list- With single turntable £72 + £18 Tax= £90)

In June 1940 ad.....The E.M.G Electrical Record
Reproducer Model D.R.7. Price £25.

Specification:

L.F. Stage: Osram H63 Valve.

L.F. Coupling: Resistance-Capacity.

Power Stage: Osram K. T.61 Valve.

Power Output: 4 Watts (approx.)

Loudspeaker: Permanent Magnet M.C.

Speaker Coupling: Transformer.

Pick-Up: Electro-Magnetic.

Motor: Induction.

Voltage Range: 200-250 A.C.; 40-60 cycles.

Current Consumption: 50 Watts (approx.).

Tone-Control, Loudspeaker mounted on independent
baffle.

DR 7



“ Massed strings have a pleasant, open quality, and the characteristics of the wood-wind are splendidly reproduced.”

DR 8 (1st ad. June 1939)

Same as DR7 but pick up is a "standard" make for thorn needles. Smaller speaker than DR 7

Oak veneer finish only £17.10.0

DAVEY ELECTRICAL REPRODUCERS: A NEW RANGE

Although the open-horn gramophone has qualities that will continue to endear it to many music lovers, the electrical reproducer has advantages that have led us to focus further attention upon it. These are its improved ability to cover the widened frequency range in modern recording, the possibility of controlling the volume and brilliance of tone, and lastly its more compact form and neater appearance.

Even in the least expensive of the models here described, the latest technical developments have been exploited to remove the crudities associated with low priced electrical reproduction. In no case has the loud-speaker been enclosed in the amplifier cabinet, and the usual boomy tone has thus been avoided. In the two smaller models, the D.R.7 and the D.R.8, the loudspeaker is arranged so that it can stand on the back of the main cabinet, thus making a compact one-piece instrument, but it can also be placed anywhere else in the room.

D. R. 8 REPRODUCER,

Price £17 : 10 : 0

In this model (illustrated here) we have sought to save expense mainly in the cabinet work, which is of simple plywood construction, finished in oak. The speaker and amplifier are the same as in the D.R.7, but the pick-up for thorn needles is a standard make selected for its responsiveness to the skilled hand-tuning which each model receives at Grape Street. The loud-speaker is housed in a 20 in. baffle, removable, as in the D.R.7. In this manner we are able to offer a really exceptional bargain in good reproduction at a modest price.



The D.R.8 is supplied with a separable loud-speaker which can be placed on the back of the main cabinet, thus making a single unit of the complete instrument, as illustrated above. The cabinet and the speaker can also be placed in different positions in the room, as is also illustrated.

DR 11 (1947)

Electrical reproducer with single turntable £99.

DR 14 (1st ad. October 1949)

All electric record reproducer equipped with the new DP4 moving coil pick up an extremely lightweight component of exceptional merit. The new high quality, high gain amplifier incorporated has been developed specially in conjunction with it. Independent bass and treble controls are provided with it, as well as a steep cutting high note filter, loudspeaker is a 12" Barker Duode mounted on a separate baffle which returns the circuit.

£116 plus £58 Purchase Tax

MODEL **D.R.14** REPRODUCER

Where circumstances make it desirable to retain existing cabinets, or parts of existing equipment, conversions to the equivalents of Models D.R.14 or D.R.15 can be effected satisfactorily and economically. These conversions are carried out by our own experienced engineers in our own workshops, and are installed and serviced, where possible, on the owner's premises.



Model D.R.14 All-Electric Record Reproducer is equipped with the new D.P.4 Moving-Coil Pick-up, an extremely light-weight component of exceptional merit. The new high-quality, high-gain amplifier incorporated has been developed specially in conjunction with it. Independent bass and treble controls are provided, as well as a steep cutting high-note filter. The loudspeaker is a 12-in. Barker Duode, mounted on separate baffle, which matches the cabinet. This is of a new design, chair-high for comfort, and finished in straight-grained walnut. Descriptive leaflet will be gladly forwarded on request.

MODEL D.R.14 complete £116 plus £58 Pur. Tax



DR 15 (1st ad. October 1949)

Same as above but with radio receiver incorporated
£150 plus £75 Purchase Tax.

KT66 Valve Amplifier

shops, and are installed and serviced, where possible, on the owner's premises.

MODEL D.R. 15 RADIO-GRAM



Newman Street turns out of Oxford Street, and is easily reached from Tottenham Court Road or Oxford Circus in less than five minutes.



MODEL D.R.15 is essentially the same instrument as MODEL D.R.14 except for the inclusion of a radio-receiving unit. This part of the instrument is carried on a hinged hopper which is drawn out to use, as shown here. The controls are neatly arranged for ease of operation. In MODEL D.R.15, the loudspeaker (a Barker 12-in. Duode) is also mounted on a separate baffle as illustrated, and the cabinet work is finished in straight-grained walnut.

MODEL D.R.15, complete £150, plus £75 Pur. Tax

These Davey Instruments may be seen and heard at No. 6 Newman Street, where the gramophone enthusiast will also find a wide selection of records, books on music, accessories, and London's finest audition rooms. Then there is the "Monthly Letter" (7/- for 12 months) which is both the longest established, and most-valued review of its kind.



E.M.G.

6, NEWMAN STREET,
OXFORD ST., LONDON, W.1
MUSEUM 9971-2-3

HAND-MADE GRAMOPHONES, LTD.

DR 15 Autoradiogram.

Basically a DR 15 adapted to incorporate automatic record changer.

DR 16 (1st ad Dec 1949)

Twin-turntable model. Also overseas radio gramophone

DR 17 (1st ad Dec 1949)

Designed to operate where no mains supply is available. Powered by car battery and spring motor. Performance is equal to mains driven instruments in all respects

Both models made to order only

DR 18 (1st ad Dec 1949)

The incorporation of less expensive cabinetwork enables this instrument to be brought within reach of a greater number of would-be owners of Davey reproducers. 3 speed motor - 2 magnetic pick-up heads plus optional thorn pick-up head
Price unknown, ad below from Feb 1952

Model D.R. 18



A moderately priced instrument for standard and micro-groove records

Model D.R.18 has already proved successful in bringing E.M.G. standards to many who would have otherwise been prevented from owning a Davey instrument through reasons of cost or space.

By building this model into a more compact and simpler cabinet, considerable saving in cost and size has been achieved without sacrificing the high standard of quality and performance invariably associated with E.M.G. Now that the D.R.18 is equipped with a three-speed motor (33 $\frac{1}{3}$, 45, 78) and two interchangeable magnetic pick-up heads, the owner is able to enjoy both standard and micro-groove records. A further head to take miniature thorn needles can be supplied if required. Model D.R.18 is suitable for use with any modern high quality speaker of 15 ohms impedance. Leaflets and price lists available on request.



E.M.G. "J" LIST

Copies of this invaluable list of records, compiled exclusively by E.M.G. and which are obtainable only from E.M.G.'s shop, price 2s. 6d., post free.



DR 24 (1st ad. May 1956)

DR24 amplifier- 12Watt, Pre-amp, DP-6 moving coil pickup with two detachable heads both diamonds. Garrard 301 turntable.

DR24- April 1959 list:

Housed in a small cabinet as illustrated. This reproducer has been designed to secure the highest possible quality of reproduction from records with the greatest simplicity of operation. Specifications: Elac Miratwin turnover variable reluctance pick-up cartridge in modified Lenco pick-up arm with detachable shell: diamond L.P. stylus and sapphire '78' stylus. Garrard model 301 transcription quality three-speed motor with speed trimmer operating on all three-speeds: D. R. 24 12-15 watt amplifier with DCU 2 pre-amplifier providing volume control, independent bass and treble balance controls, steep-cutting filter with choice of three frequencies'. 3, 5 and 8 kcs and variable slope selector switch giving tape input, radio input, records '78' and two compensator positions for microgroove records. All inputs are provided with pre-set volume controls. Jack sockets are provided on the control panel for tape replay and tape record.

Price: £120 0s. 0d., plus tax £45 0s. 0d. -Total £165. 0s. 0d

From Audio Audio Jonathan Hill:

DR24 mono valve amplifier (1956+), power output I 2 Watts. output valves KT66, sensitivity 500mV for I 2 Watts, output impedance 15 Ohms.

Original price £27. (For use with DCU I control unit).

DCUI control unit (1956+), pickup, radio and mic inputs with selector switch, 2-position record equalisation switch, bass, treble, volume and on/off controls, filter with variable switch. Original price £18. (For use with DR24 amplifier)

DR 24

*E.M.G. Control Unit DCU1 and
Amplifier D.R.24, 12 watts. Price
complete £45*



XVI

The GRAMOPHONE

May, 1956

THE PROOF OF THE PUDDING . . . is in the eating, but the quality is in the ingredients The pudding . . . THE **DR 24** REPRODUCER

The ingredients . . .



*DR 24 Amplifier
and pre-amplifier.*



*DP 6 Moving Coil pick-up.
Two detachable heads, both
with diamonds.*



*Garrard Model 301 3-speed
Transcription Motor with
eddy-current speed-trimmer
operating on all three speeds.*

THE DR 24 AMPLIFIER

Output 12 watts with lowest overall distortion figures including pre-amplifier.

Background noise much lower than most, including pre-amplifier. Negative output impedance for better speaker-control in the bass. Special feed-back stabilisation at very high frequencies. Result—better transients, cleaner bass, fresher tone colours, and that little extra bit of transparency that means so much.

THE DP 6 PICK-UP

A champion amongst trackers, clings like a limpet to the grooves, especially those difficult ones near the end of the record which so readily sound rough. Heavy piano chords without jarring and splendid drums. As a transducer the most satisfying of all, clean, clear transients without exaggeration. Very deep bass without shudders. Clear sweet string tone, voices really natural. In all a tremendous "presence".

THE GARRARD MODEL 301 MOTOR

Expensive but worth it. Perfectly silent.

Lowest "wow" and "flutter" figures.

No rumble even when listening with a 15-in. speaker.

The DR 25 Radiogram is the same instrument with the addition of a radio receiving unit, A.M. or F.M., which may be specified to meet the customers requirements.

*Come to 6 Newman Street and "taste" it;
with a D.C.R. 60 Speaker to complete
the dish.*



E.M.G.
*Handmade
Gramophones Ltd*

6 NEWMAN STREET, OXFORD ST., LONDON, W.1

DR 25 (May 1956 ad) - As above with AM-FM radio receiver.

DR 25 Radio-gramophone April 1959 list:

Housed in a console cabinet with hopper carrying the radio tuner, as illustrated. This radiogram incorporates all the components of the D.R. 24 reproducer. Various radio tuners can be fitted by quotation, and the price below covers the inclusion of one D.F.M. VHF/FM radio tuner.

Price: £144.0s. 0d., plus tax £54.0s. 0d. -Total £198.0s. 0d.

DR 28 (June 1955)

Redesigned four watt amplifier, Collaro transcription quality pick-up, Garrard 3 speed motor, type PX.

Bass & Treble control. W-16½". D-18". H-10" Light walnut veneer £48 + £18 P.T., Without loudspeaker.

DR 28

Record Reproducer



This successor to the widely popular D.R.18 Reproducer takes on a new standard of excellence without any increase in price.

The amplifier has been redesigned to cover a wider frequency range with yet lower residual distortion. Independent bass and treble balance controls have been fitted in place of the single tone control of the earlier instrument. In addition to the "33" and "78" compensator positions, a third switch position allows for input from radio, or other sound source.

A new pickup has been fitted, namely the Collaro Transcription model type PX. This contributes largely to the improvement which enables us to recommend the D.R.28 for use even with the best loudspeakers available. The remarkable clarity and sharp definition of this pickup are particularly valuable to those listeners who are compelled by circumstances to take their music at a very

low level of volume. The rich detail and transparency of tone insure that the interest of the music is not lost with diminishing volume. At the same

time the redesigned 4-watt amplifier is stout enough to provide quite an imposing volume level in a fairly large room.

The new pickup also shows striking ability in handling the older and more difficult specimens of "78" recording.

The cabinet is finished as standard in light walnut veneer. Other finishes supplied to order.

Dimensions : width 16½", depth 18", height 10".

Price £48.0.0 plus Purchase Tax £18.0.0.

(Without loudspeaker)

DR 28-3pcs (Aug 1956)

- Walnut Garrard T/AC 3-speed. Collaro transcription quality pick-up and free ball bearing arm £25.10.0
- Same with DR28, 4 watt amplifier and grey enamel case £26
- Whiteley 12" speaker with single cone . Open Baffle 26'x 28'. £23.7.6

The **DR28 REPRODUCER** *in 3 piece form*



**The same quality of reproduction
at reduced cost**

1. Walnut playing desk cabinet.
Garrard T/AC 3-speed motor, with
special start-stop lever.
Collaro PX transcription quality
pickup on free ball-bearing arm.
Total cost assembled **£25.10.0**
2. DR28 4-watt amplifier in grey
enamel case with control panel
mounted **£26. 0.0**
3. Whiteley single cone 12 in. speaker
on open baffle 26 in. x 28 in. as
illustrated **£23. 7.6**

Other speakers from £17. 6.0 to £41.12.6

DR28- April 1959 list:

D.R. 28 Record Reproducer

A high quality reproducer housed in a table cabinet, as illustrated. Incorporates the Lenco GL56 4-speed variable motor with Lenco pick-up arm and shell: PX transcription quality turn-over crystal pick-up cartridge: D.R. 28B 4-watt amplifier with independent bass and treble balance controls, volume control and selector switch giving positions for radio input, '78' records, and two compensator positions for micro-groove records.

Price: £54 10s. 0d., plus tax £20 8s. 9d. Total £74 18s.9d.

From Audio Audio Jonathan Hill:

DR28 integrated mono valve amplifier (1956+), power output 4 Watts, input sensitivity 30mV for 4 Watts, output impedance 15 Ohms, radio and pickup inputs with selector switch, 2-position record equalisation switch, bass, treble and volume controls. Original price £21. (Combined mono valve amplifier and control unit).

From Hi-Fi Year book 1956

E.M.G. Amplifier DR28, with controls on panel.

Power output, 4 watts. Sensitivity,
30 mV for 4 watts.

Inputs, radio; pickup.

Controls, selector for above, with 2 record equalising positions; treble; bass; volume; output impedances, 15 ohms.

Price £21. E.M.G. Handmade Gramophones Ltd., 6 Newman Street, London, W.7.

DR 29

As the DR28 but radio now VHF/FM

DR29- April 1959 list:

D.R.29 Radio-gramophone

Housed in the same cabinet as the D.R. 28. This radio gramophone incorporates all the same components with the addition of the DFM 1 VHF/FM radio receiver unit. The unit incorporates a new completely stable automatic frequency control circuit which makes it particularly easy to tune-in and eliminates the possibility of drift. High sensitivity has been secured with the lowest residual distortion and exact compensation for the B.B.C. high-note pre-emphasis is applied. Price: £75 0s. 0d., plus tax £28 2s. 6d. Total £103 2s. 6d.

The DR29 Radiogram — Compact — Efficient — Good Looking. Like the popular DR28 Reproducer this new model incorporates the DR28 4-watt Amplifier, PX Transcription pick-up and Garrard T/AC 3-speed motor. With all these it also has a very effective VHF/FM receiving unit, highly sensitive, which does ensure good reception in difficult “fringe” areas and yet is stable and very simple to tune in. Call in and — hear it for yourself at our showrooms in conjunction with the DCR62 corner reflector speaker (shown in our illustration).

radiogram



D.R. 34 S Stereo Record Reproducer April 1959 list:

Housed in a cabinet similar to the D.R. 24 reproducer illustrated in our leaflets, this is a reproducer designed without compromise to give the finest stereo reproduction available. It is the stereo companion model to the D.R. 24 reproducer. Specification:

Decca ffss stereo pick-up: Lenco GL59 4-speed variable motor. DCU 3S stereo control pre-amplifier with all the usual controls, plus channel balance control, and duplicated Tape in and Tape out jock-socket; and two DA 20 10-watt main amplifiers.

Price: £128.10s.0d., plus tax £48.4s.9d. Total £176.14s.9d.

DR 34S (July 1963 ad)

Same as DR 35S but without radio. £216.2.6 inc P. tax

DR 35

Stereo radiogram plus VHF/FM radio £214.10.0 Inc P.T
£39.10.0 each speaker....

DR 35S (July 1963 ad.)

Stereo radiogram plus VHF/FM radio £244.12.6 Inc P.T

16 Advert

The GRAMOPHONE

July 1963

As fine as skill and modern technique can produce

In Model DR35S, the Audio-Electronics division of E.M.G Handmade Gramophones Ltd. has produced an instrument of truly superlative quality. It is designed to play mono and stereo records, to receive VHF/FM broadcasts and to play back from the low-level output of a tape recorder. The fully transistorised control preamplifier and radio tuner are new products specially produced by E.M.G to provide the highest attainable fidelity of reproduction together with the great advantages of reliability, high sensitivity and permanent background silence which the transistor designs make possible. Stereo/Mono outlets to tape recorder are also provided. Model DR34S is the same specification but without radio.

Model DR35S, then, is for the listener for whom perfection is the overriding requirement, irrespective of cost, and loudspeakers or tape recording equipment in keeping with these high standards can also be supplied.

But E.M.G cater also for the listener who must consider price, and there is a range of E.M.G equipment at modest prices from which to choose. All of this is built to E.M.G standards, so that, no matter what you spend, you can be assured of the best value for money and an instrument that will give keen and lasting satisfaction. We invite your enquiries for the conversion and modernisation of existing equipment as well as for new instruments.



MODEL DR 34S
Record Reproducer

£216.2.6
inc. P. Tax

MODEL DR 35S
Radio Gramophone

£244.12.6
inc. P. Tax

E · M · G

HANDMADE GRAMOPHONES LTD

6 NEWMAN STREET, OXFORD STREET, LONDON W.1.

Telephone: MUSeum 9971-2-3

Between Tottenham Court Road and Oxford Circus Stations. Open all day Thursday. Half day Saturday.

The E.M.G. Equipment Showroom is on the first floor, and is reached by going through the record shop, which includes stocks of specially imported E.M.I. issues.

E.M.G pickup. DP 1

DP 1 Pickup Moving Coil – D Way pickup £3.10.0

TECHNICAL REPORTS

The Davey DP2 Pick-up

Price £3 10s.

Pick-ups specially designed, constructed and tuned for use with fibre needles are few and far between. Such a pick-up can clearly not be cheap since much care has to be lavished on its adjustment. But the care is well repaid, as this product from the E.M.G. people conclusively shows. Used in conjunction with a good three-stage amplifier (with no shunt resistance across the pick-up) and a good speaker, the pick-up acquits itself so surely and effectively as to give those who have not previously experienced the best electrical reproduction with fibres a new conception of the delicacy of recorded string tone, of the reedy wood-wind, and of the body and depth of a good orchestral or pianoforte recording. This it does with but little obtrusion of surface noise, yet with an ease and confidence that betokens a most unusual smoothness and absence of peakiness in the response.

We were not surprised to find, therefore, when we came to take measurements of the voltage output at different frequencies that the response was constant between 500 and 3,000 cycles per second (within the limits of trustworthiness of such measuring instruments as are available for the purpose), and that such peaks as came into evidence higher up the scale were of quite negligible magnitude. In the bass, of course, there is a rising response with the usual trough, due, we presume, to carrying-arm anti-resonance, though even the effect of this was substantially mitigated by means of the flexible connection afforded by the Meltrope tone-arm fitting.

As commercial pick-ups go, the voltage output is on the low side and a three-stage amplifier is a necessity. For *ade luce* instrument, which the sample we tested certainly was, this is no real disadvantage, for a three-stage amplifier is a virtual necessity in any case for the highest standard of electrical reproduction. In such circumstances, however, accurate measurements of voltage output at different frequencies by means of constant frequency records and a Moullin voltmeter are only obtained with difficulty. Up to the time of going to press we have not been quite satisfied with our measurements with fibre needles. In the above table the results were obtained with loud steel needles. To obtain these measurements we had to interpose an amplifier between the pick-up and voltmeter and allow for the amplification, so that the slight variations in the figures are even more uncertain than they usually are. At the moment, however, they are the best that we can do.

From our point of view, the important test was the listening test, and here, as we have already indicated, the instrument came out with flying colours.

Frequency	Voltage Output
5160	-002
4700	-02
4450	-07
3900	-06
3540	-1
3015	-16
2512	-12
2075	-13
1788	-13
1579	-12
1340	-12
1035	-13
993	-14
893	-14
733	-15
526	-13
445	-19
340	-22
261	-27
205	-25
150	-27
79	-29
52.4	-22
33.3	-09

The construction is of interest in one or two respects. The armature itself is a tiny affair, being little more than a hollow sheath cut to take fibre needles. It is mounted on a brass pivoting plate which rocks on knife edges, hooked steel springs being used to keep the plate on the knife-edges and at the same time to give a small returning moment to offset any magnetic over-balance. The movement of the armature is particularly free, and the damping agent being viscous has practically pure resistance characteristics in contrast to the decidedly capacitative effects of the more usual india-rubber. The magnet gaps are relatively large so that harmonic distortion should be quite small.

The Meltrope type of flexible back fitting makes the pick-up readily adaptable to almost any sort of pick-up arm or tone-arm, but a special carrying-arm is available from E.M.G. at the price of £1.

The Expert Senior P.M. Speaker Price 5 gns.

Our tests of this permanent magnet chassis were made with the speaker fixed to a large fire-screen type baffle which has been designed specially for it. The baffle board itself is of quartered oak laminated board measuring 36 in. by 30 in. by $\frac{3}{4}$ in. thick, finished round the edges with a plain ebonised bead and mounted on ebonised pillars. The speaker aperture on the baffle front is "dressed" with a plain circular bead in oak, and the whole of the baffle back is faced with a $\frac{1}{2}$ in. fibrous board (Treetex, to be precise) so as to minimise any tendency for the baffle to resonate in sympathy with the music. Unfortunately a photograph was not available at the time of going to press, but readers may take it from us that the finished baffle has a very distinctive and modern appearance.

The speaker chassis is rather a massive affair with a 7-in. four-claw magnet, a 9-in. linen cone, a 15-ohm impedance speech coil, and front spider type centring device. Here again care has been taken to exclude dust from the gap by lining the pressed steel cradle with a stiff muslin net, and enclosing the magnet in a fabric hood.

Even a cursory examination of the whole assembly is sufficient to inspire confidence in the design, and shows that great care has been taken to ensure mechanical stability as well as to present an appearance that is pleasing to the eye. And when we came to the playing tests we were not disappointed. There is depth and breadth in the bass, no undue

emphasis of the lower middle register, and a brightness and forwardness in the treble that for a P.M. type speaker will be hard to surpass. Even its counterpart, the Expert Senior energised model, is little superior except as regards efficiency. Records and radio personalities whose voices we know well—Elisabeth Schumann, Harold Williams, our own Christopher Stone, etc.—reveal an extraordinary natural tone with but slight suppression or emphasis of their little idiosyncrasies. In orchestral numbers, symphonies and piano concerti one gets that longing for the little extra punch and depth that our own and the Expert energised speakers produce. On the other hand, high strings and wood-wind are quite clean and not too hard or shrill.

These results were obtained with the speaker connected to our office amplifier, which has two LS6A valves in push-pull; the coupling transformer ratio used being 25:1.

The price of the complete baffle and speaker is 10 guineas, and the Expert Senior energised chassis costs 6 guineas, and 11 guineas with baffle.



DP 4 Moving Coil Pickup

DP 4



**IN A WORLD OF
QUALITY REPRODUCTION
THE D.P.4 IS OUTSTANDING**



SUSPENSION
By gimbal bearing back pivot, with counterpoise spring, giving one-third ounce pressure on needle point.



NEEDLE FITTING
Pick-up head twists to allow easy insertion of miniature needle, which is wedged in a tapered hole. The arrangement of the aperture is such that the needle can easily be inserted by feel alone.



EASY REMOVAL
Pick-up and arm can instantly be removed from, and replaced on, the back pivot, without use of tools, and without breaking or making any wire connections.

For music lovers a new pick-up by Davey Radio is always an event, and the D.P.4 is the most important development yet. This moving coil pick-up sets a standard well beyond that accepted as good today, and the listener who has enjoyed good quality up till now will find in the D.P.4 something even better. The D.P.4 can only be coupled directly to special high quality high lift amplifiers designed for use with moving coil pick-ups. With most other amplifiers our pre-amplifier stage will be necessary, in addition to the matching transformer. Intending purchasers are recommended to give us details of the equipment with which they propose to use the pick-up and we will gladly advise on the best method of bringing in the D.P.4.

The D.P.4 is designed for use with Davey Miniature Thorn needles, and with special Miniature jewel tipped needles made to fit it. The quality of reproduction with thorn needles will come as a great surprise to many.

D.P.4 Pick-Up	...	£6.10.0
	Pur. Tax	£3.5.0
Matching Transformer	...	£2.2.0
Pre-Amplifier Stage	...	£5.10.0

The music-lover will find at 6 Newman Street everything he needs for the enjoyment of good music well reproduced. There is the range of new Davey Instruments, fine records, sensible accessories, books on music, and always the co-operation of an intelligent and enthusiastic staff. Orders can be met by post with the help of our well-known "Monthly Letter."

E.M.G.

HAND-MADE GRAMOPHONES LIMITED
6 NEWMAN ST., OXFORD ST., LONDON, W.1

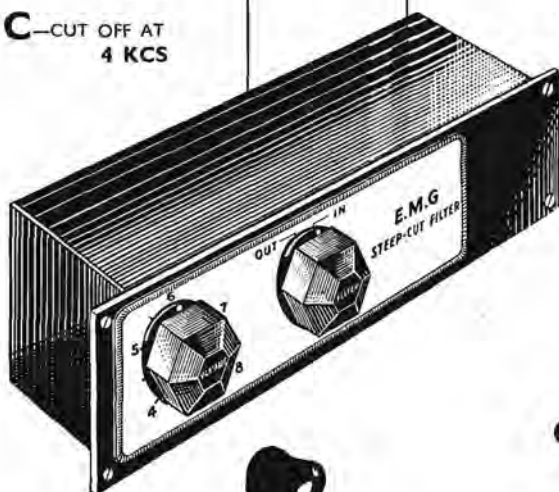
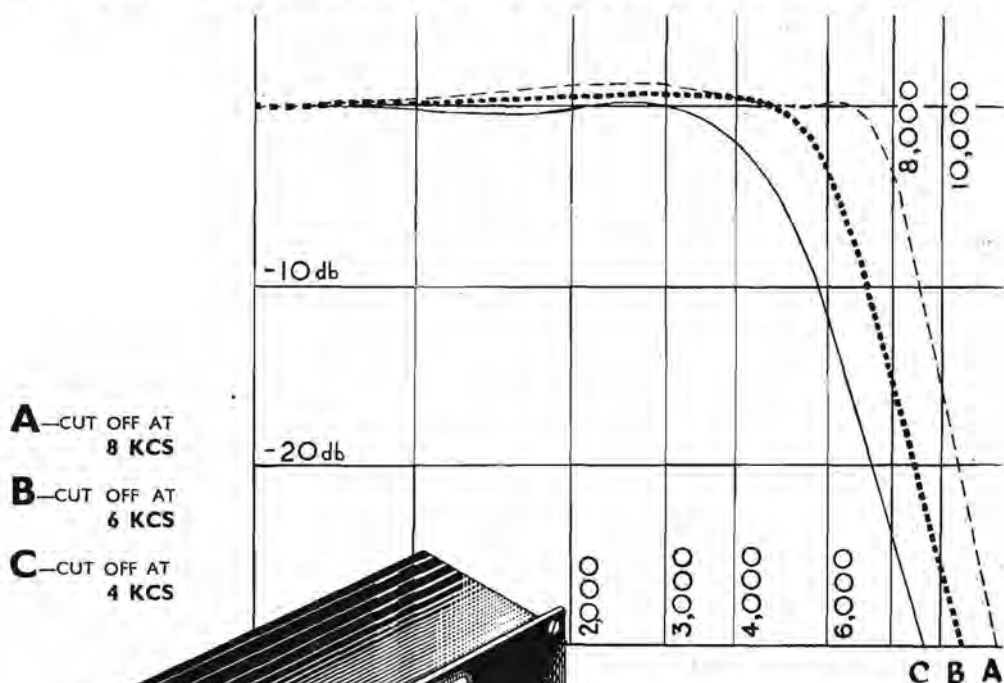
Telephone: MUSeum 9971-2-3



Davey Steep Cut Filter (c.1950)

Davey Steep Cut Filter 12/6

E.M.G. VARIABLE-FREQUENCY STEEP-CUTTING FILTER



The purpose of the E.M.G. Variable Frequency Steep Cutting Filter is to enable the user to cut off audio-frequencies above any selected level between four and eight thousand c.p.s., which it does without distortion or appreciable loss of volume. The uses to which this filter can be put include cutting out needle-hiss so that reproduction from older "78" records which are limited in the upper register becomes surprisingly good; use with LP records for which the filter is particularly recommended; use with radio by which irritating heterodyne whistles can be eliminated without loss of quality. Experimenters also find the scale-markings and steepness of cut (average 30 db. per octave) of great value. The filter connects very simply between the output stage and 15 ohm loudspeaker and can easily be fitted by anyone.

- Cuts frequencies above any desired point between 4,000 and 8,000 c.p.s.
- Recommended for use with long-playing records.

E.M.G. SERVICE

This includes the shop in which are stocked the finest selection of standard and long-playing records for lovers of serious music, books, scores, and accessories. Also there are the superb Davey Instruments and Loudspeakers, and, of course, that widely-relied-on record review, "The Monthly Letter" (8/- post free for 12 months). The E.M.G. "J" List of Special Issues costs 2/6 post free, and is recommended for all connoisseurs of music.

In metal case 7 1/2" x 2 1/2" x 2" with front mounting panel 8" x 2 1/2". Two controls —In-out switch and Setting for filter. For use with 15 ohm loudspeakers.
PRICE

£4.10.0

E.M.G. HANDMADE GRAMOPHONES LTD.,
 6, NEWMAN ST., OXFORD ST., W.I. **MUSEUM**
 9971-2-3

EMG AMPLIFIERS

EMG Super Amp (1931)

Achievements

will, no doubt, be in a position to transform the Minor into a complete set with an opportunity, and although the set by moving the majority of the sensitivity, the output to

The first is that E.M.G. Hand-Made Gramophones, Ltd., have constructed and supplied to a Heston aeroplane firm a super amplifier which is capable of delivering 20 watts undistorted output. It is claimed that the effective range of speech and music is at least one quarter of a mile radius and that the quality of reproduction attains a standard hitherto only associated with the best moving coil speaker operating indoors. The speaker used in conjunction with this amplifier is a new type super power moving coil instrument just produced by Phillips Radio. The illustration gives some idea of the layout and general appearance of the amplifier and gramophone unit.

ison, 33, Percy

The second achievement mainly concerns overseas readers, in that E.M.G. have produced a Mark XA horn made in two sections specially for export. Since freightage is based on ton-cubic foot capacity the advantage of dividing the horn is that the cost of sending it overseas is reduced by approximately 50 per cent. When one considers that the cost of sending a complete Mark XA, say, to Africa is about a third of the price of the instrument it is indeed an achievement, and moreover since the bisecting of the horn has had no deleterious effects on the quality of reproduction.



A SUPER AMPLIFIER BY E.M.G. LTD.

The R.A.F. Pageant

As in previous years, visitors to the Air Force display at Hendon were kept fully informed of every detail of the events by a huge Marconiphone installation of microphones and speakers. Three $1\frac{1}{2}$ kilowatt amplifiers were used, the output stages of which consist, in all, of six Marconi high power valves, consuming 24 amps. at 15 volts for their filaments. The speakers included 36 horn type instruments and 4 of an entirely new type, known as the

Ship HiFi (Sept 1937)

E.M.G. Hand-made Gramophones

Not all the good things, however, will be seen or heard within, or in close vicinity to, Radiolympia.

E.M.G. Hand-made Gramophones, although they do not propose to stage a special show, will be proud to show and let visitors hear their range of acoustic gramophones, receivers and radiograms. There are fixed designs, of course, but instruments to suit individual requirements are a speciality. Take, for example, the radiogram illustrated. This was specially designed for Mr. Sopwith (the America Cup contestant) for his yacht the



*The Philante's radio and
record reproducer*

Philante. Imposing, and unusual, too. Naturally it is a radio-gramophone incorporating a separate short wave unit which can be connected to the main amplifier. The gramophone includes an automatic record changer for the playing of music in the lighter vein (the unit incorporated is a Collaro), and also a special gramophone unit fitted with the **E.M.G.** DP2 pick-up designed for fibres, of course. Eleven loudspeakers each fitted with their own volume control and pilot light are distributed in appropriate positions on the boat. These are fed from four separate power stages linked to the main chassis by suitable switchgear.

EMG mono valve amplifier (1947-54)

EMG mono valve amplifier (1947-54), power output 5 Watts, output valve PP3/250. Housed in a black metal cabinet with a lift-up lid revealing the chassis layout beneath. The valve line-up is 1 x Osram KT61, 1 x Brimar 6SL7, 1 x Marconi U50.

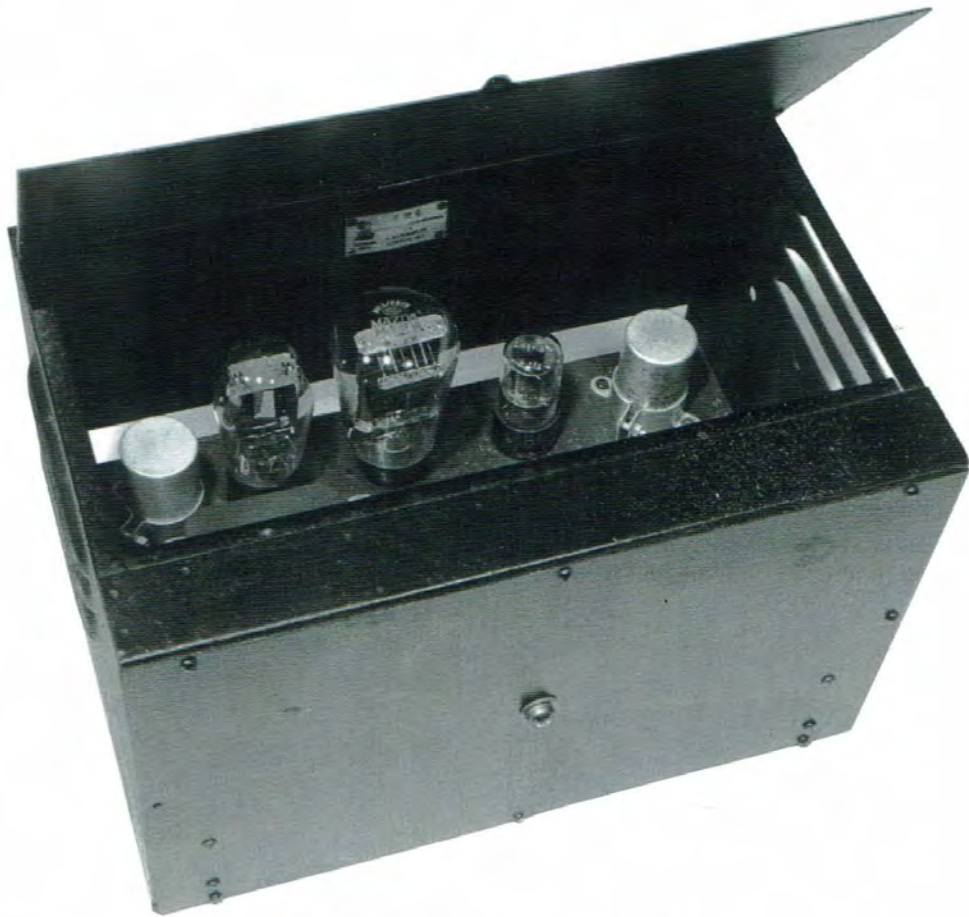


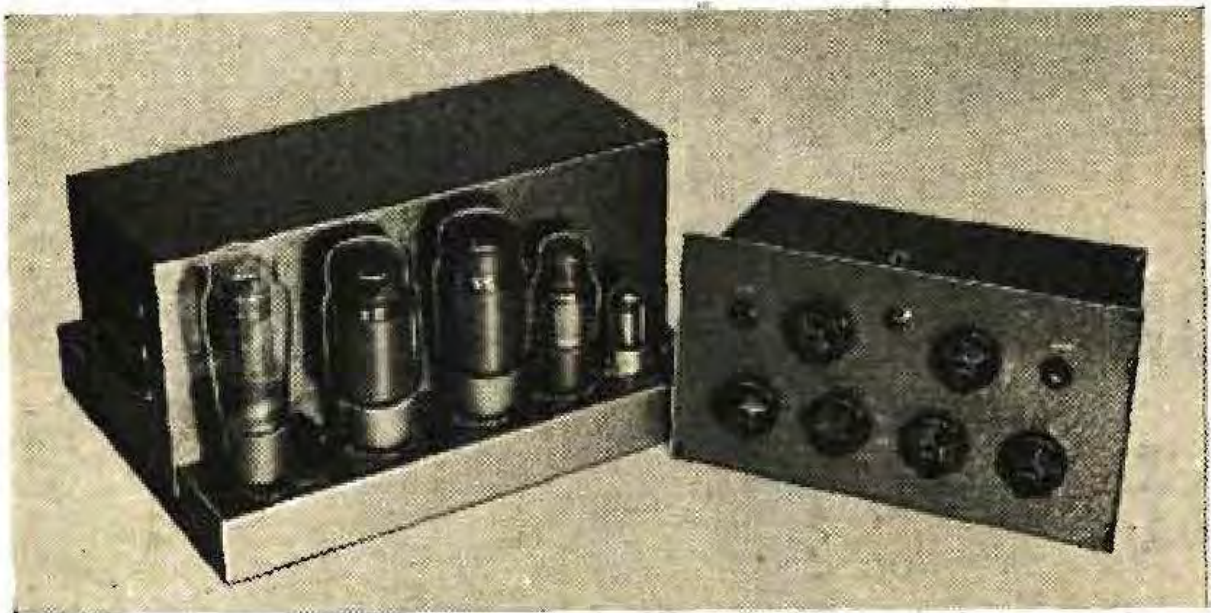
fig.31. EMG mono valve amplifier (1947-54).

DA24 Amplifier with DCU2 control pre-amplifier (July 1958)

12-16 watts undistorted output.

Many special refinements, including "infinite" damping factor. Control unit provides all usual facilities including steep-cutting filter with choice of frequency and slope.

Price· complete £45.0.0.

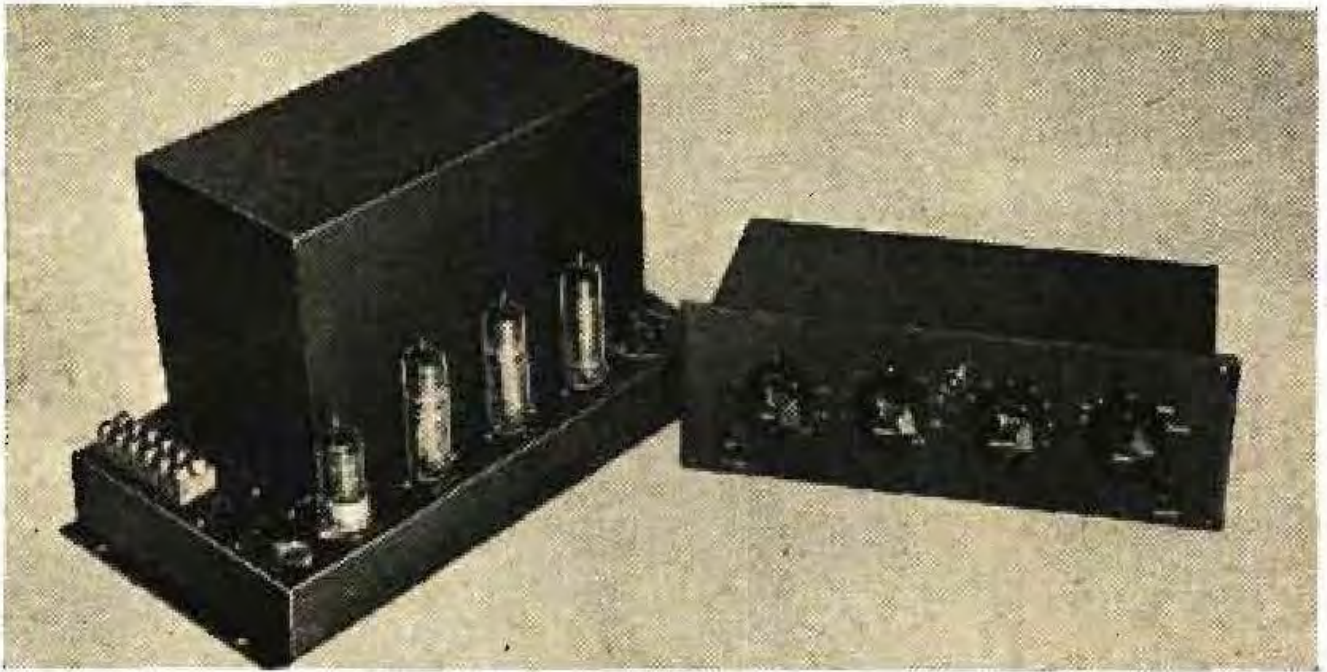


DA20 Amplifier with DCU3 control pre-amplifier. (July 1958)

8-10 watts undistorted output.

Built on similar lines to DA24. Control unit similar to and interchangeable with DCU2, but without filter.

Price complete £29.0.0.



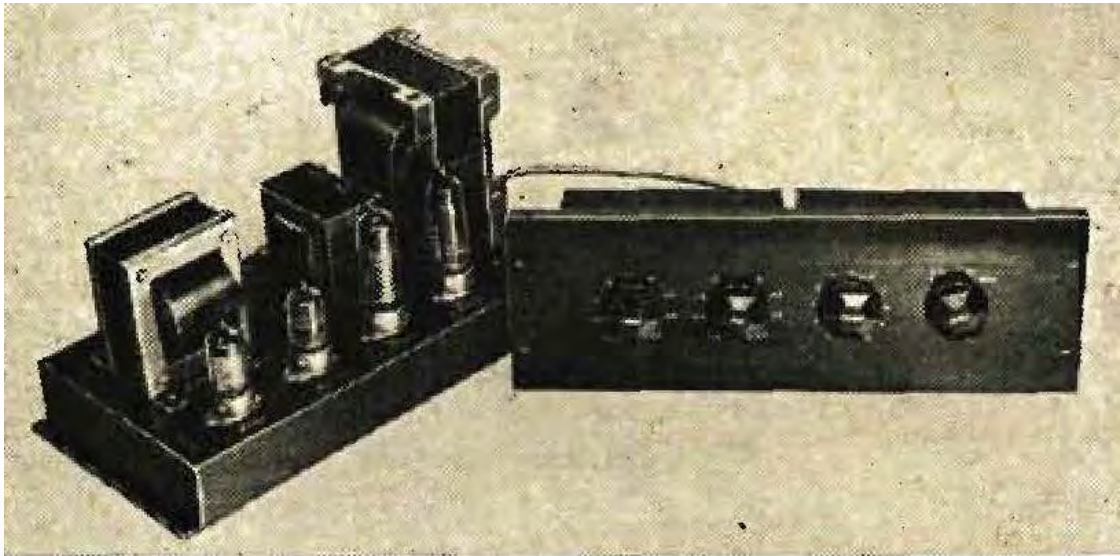
DA38 Amplifier (July 1958)

4 watts undistorted output. A small single-ended amplifier of outstanding performance.

Price, with Control Panel, £23.10.0.

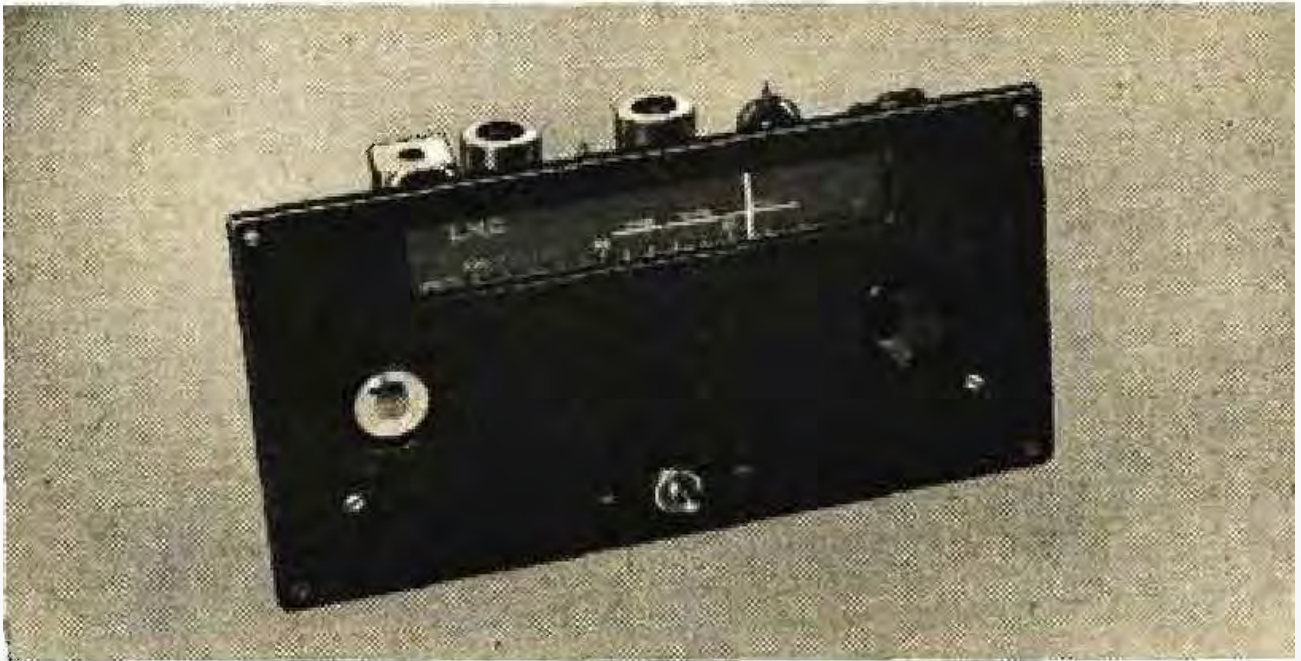
Price, with controls on flying leads, £21.0.0.

Filter £3.10.0. extra.



DFM1 Radio Tuner (July 1958)

A new VHF/FM Tuner designed for the highest quality of reception. Distortion negligible even at full modulation. An original A.F.C. circuit holds dead-center tuning with unusual tenacity. Sensitivity adequate for fringe areas.
Price £26.2.0. P.T. included



DFM2 Radio Tuner (September 1963)

Transistorised F.M. Tuner. Operates with self-contained (V battery or external power source.

Price £21 + £3.18.9 pur.Tax. In grey metal case

Price £23.2.0 + £4.7.0 pur.Tax. In beach wood cabinet

a transistorised f.m. tuner of advanced design



Model DFM/2 in
grey Steel Case **£21.0.0**
+ £3.18.9 pur. tax.

Model DFM/2 in
beech wood cabinets **£23.2.0**
+ £4.7.0. pur. tax.

This new tuner by E.M.G. is so sensitive that it will provide very good reception under the most difficult conditions. Performance is characterised by complete stability and an audio output of exceptionally good quality. Completely transistorised, it will operate from a self-contained 9V battery or 12V/10mA external power source. Available in two styles of housing—in grey steel case as illustrated, or in well styled beech wood cabinet. Model DFM/2 has been designed particularly for use with very high quality amplifier systems. *Descriptive leaflet on request.*

DCU3S amp C.1960

- EMG AMP DCU3-S (Stereo) Serial No 6301
- Each channel: EL84 pair / EC90 / EF86
- Pics of amp kindly supplied by J.Davis

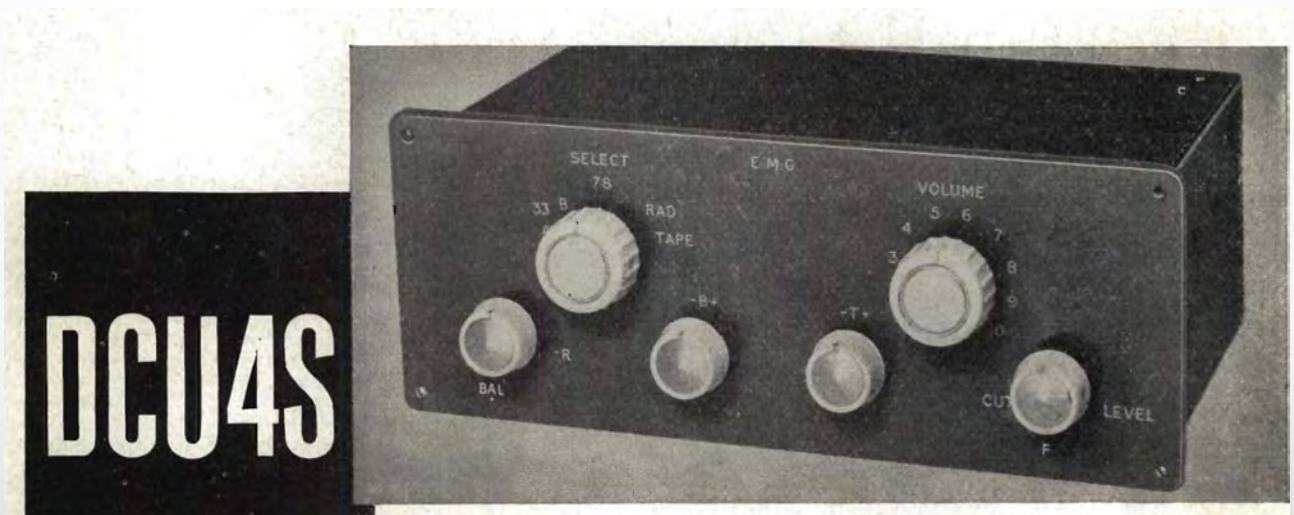


DCU4S amp April 1962

- Input Selector accepts mono or stereo signals from magnetic pick-up, radio tuner and tape recorder.
- Choice of two compensators for LP discs, one for 78.
- Base control: ± 10 dB at 40 cps relative to 1 Kc/s.
- Treble control: ± 12 dB at 12 Kc/s relative to 1 Kcfs.
- Filter: 2 dB down at 3 Kc/s: 15 dB down at 9 Kc/s when turned to full.
- Distortion is less than 0.1% at 1 volt out; limit of undistorted working is approximately 2 volts out, making the unit suitable for all types of amplifiers.
- Stereo balance control.
- Channel separation better than 60 dB.
- Power requirements: 12 volt supply from battery or dropped from smoothed H.T. line of main amplifier. A 9-volt battery will be found equally adequate.
- For panel mounting into cabinet

DCU4S: Stereo pre-amp and control unit £28.10.0

DCU4: Single channel pre-amp/control unit £16.0.0



EMG SPEAKERS

EMG designed and made speaker baffles and cabinets. They used quality speaker drivers from an array of manufacturers; prices varying accordingly.

1930 -1950.

EMG mainly built baffle speaker housings for their DR range of electrical reproducers.

1951 onwards.

EMG designed and built cabinets for their speaker systems. These were sold separately and with their growing DR range.

EMG mainly designed and built, Corner Reflex Speakers. For mono, one speaker was placed in a room facing into a corner. The sound bouncing off the walls giving a full but non-directional sound.

A pair of speakers for stereo facing forward or into a corner.

EMG SPEAKERS

EMG BAFFLE SPEAKERS (1930-1950)

EMG mainly built baffle speaker housings for their DR range of electrical reproducers.

DAVEY RADIO

*A
new*
LOUDSPEAKER



*giving high quality
reproduction, at
the remarkably low
price of £5*



*Plain Baffles in Oak, Mahogany
or Walnut, £2.15.0. Speaker
to choice, at extra cost.*



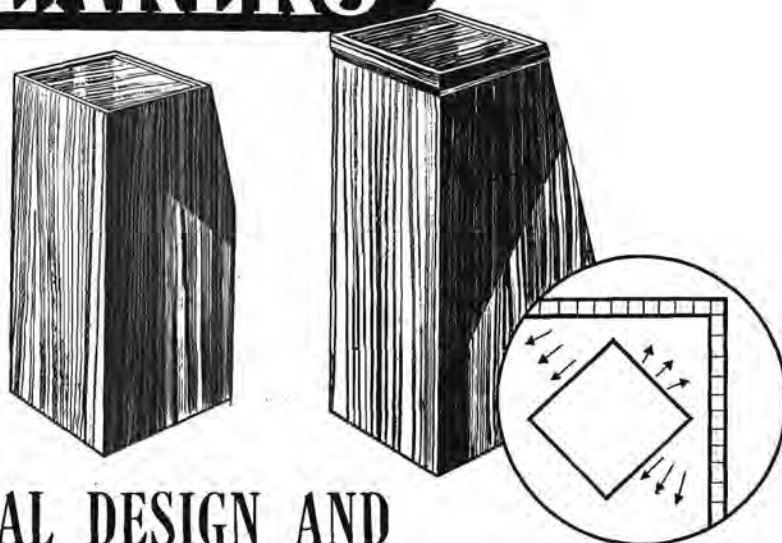
D.R. 8 Loudspeaker

EMG SPEAKERS April 1951 Speakers DS 50 & DS 51

D.S. 50. (April 1951.). 37" high, 16" square at base, with 12" speaker unit. 15ohm. £45 inc P.T.

D.S. 51. (April 1951.). 42" high x 18" wide x 16" top, with new type 15" speaker unit. 15ohm. £65 inc P.T.

2 SPEAKERS



OF UNUSUAL DESIGN AND REMARKABLE PERFORMANCE

These two new Davey Speakers mark an interesting departure in design from the more usual baffle and corner-cabinet types. Both are Corner-Reflector Speakers, and achieve their realistic and agreeable presentation of music by using to advantage the surroundings in which they are placed. The speakers themselves face towards the corner, and the fronts of the cabinets are plain and unobtrusive. Sound is heard reflected from the walls round about. Not only is the undesirable "beam" effect associated with corner cabinets and baffles completely eliminated, but there is apparent dispersal of the source of sound also, which produces at once the effect of great breadth of tone and, with it, the most beautiful separation of instruments and instrumental groups.

Compared with a baffle, these Davey cabinets extend the response of the speakers into the deep bass very significantly without any use of resonant or near resonant systems. In fact, the cabinets are so constructed and treated internally that they are absolutely non-resonant. The result is a bass response that is not only deep but very clean and analytical.

Since these Speakers are placed 2 ft. away from the corner they do not have to be fitted flush against the walls, and there are no difficulties with such obstructions as switches, pipes, or skirting boards.

MODEL D.S. 50

37" high x 16" square at base, with 12" speaker unit (15 ohms).
£45 inc. P.T.

MODEL D.S. 51

42" high x 18" wide x 30" deep at base, tapering to 18" x 16" at top, with new-type 15" speaker unit (15 ohms).
£65 inc. P.T.

EMG.

HANDMADE GRAMOPHONES, LTD., 6 NEWMAN ST., OXFORD ST., W.1

Telephone: MUSrum 9971 (3 lines)



EMG SPEAKERS March 1953 Speakers DCR 60-61-62

DAVEY CORNER REFLECTOR CABINETS



MODEL D.C.R.60



MODEL D.C.R.61



MODEL D.C.R.62

THE DAVEY Corner Reflector Loudspeaker Cabinets are the outcome of a systematic investigation of the properties of loudspeaker housings of all the many kinds in use to-day, and both our own listening tests and the many expressions of approval by our customers convince us that this system now represents the best means of achieving a highly realistic presentation of reproduced music in rooms of average size, having due regard to domestic convenience and the avoidance of fantastically high cost.

These Corner Reflector Cabinets are placed with the Speaker facing away from the listener and towards the corner near which they stand, so that the music is heard reflected from the walls of the room. As a result, the single point source of sound is completely dispersed so that the music seems to come from a wide "platform" right across the corner of the room, an effect which is both realistic and delightful. "High-note beam" associated with all front facing cabinets, corner cabinets and baffles is quite broken up, and the music sounds the same in all parts of the room.

These Davey Cabinets are designed completely to absorb reverse radiation from the speaker-cone and faithfully to simulate the performance of an infinite baffle. Thus response to the deep bass is extended far beyond the

possibilities of an open baffle of reasonable size. The size and shape of these Cabinets makes stiffening relatively easy, and they are in fact carefully stiffened by interior bracing at the design stage. Although the bass response is deep and powerful, there is no booming in either bass or middle registers such as mars so many ambitious and expensive speaker housings to-day. Nor is there any use made at all of any resonant or near-resonant acoustic system, since these always produce undesirable coloration of bass tone. The bass is clean, open and free as with an open baffle.

Davey Reflector Cabinets stand from two to three feet clear of the corner into which they face. Consequently obstructions such as skirting, pipes, switches or even book-shelves present no impediment to Davey housings, and a suitable corner can nearly always be found for them. Listeners accustomed to ease and sense of space that comes from corner-reflector listening find it almost impossible to return to ordinary frontal listening. The one-point source seems conspicuous and unnatural, and the extreme high note response tiring to the ear for lack of diffusion.

Any first-class speaker unit will, when installed in these Davey Cabinets, develop its highest realism and give the maximum of pleasure.

MODEL D.C.R.60 Height 42in., width 18in., depth 30in. at base tapering to 18in. at top. Primarily designed for 15in. dual-concentric speakers, particularly the Fountain. Recommended also for 15in. bass speakers with separate tweeters which can stand on the flat top of the cabinet. With a Fountain Unit, this cabinet will give results surpassing those of many systems costing two or even three times the price.

MODEL D.C.R.61 Height 40in., width 16in., depth 24in. tapering to 16in. at top. For first-class 12in. speakers, especially dual-concentric types.

MODEL D.C.R.62 Height 37in., width 16in., depth 16in. with sloping speaker panel. Suitable for good quality 12in., 10in. or 9in. speakers. Size of speaker should be quoted when ordering.

E.M.G. HANDMADE GRAMOPHONES LTD., 6 Newman St., Oxford St., W.1

Telephone :
MUSeum 9971

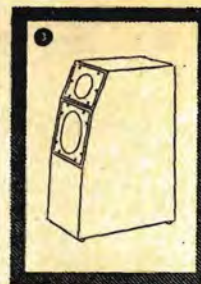
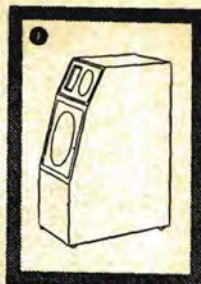
EMG DCR SPEAKERS (c. 1957)

DCR 15.8T (Oct 1956 ad). Davey Corner Reflector Speaker. 3-speaker System?. Any tweeter, Horn loaded Kelly Ribbon or Goodmans Axiom-80 9in which needs no separate tweeter. Or 15" Goodmans.

- D.C.R. 15.8.T. Height 45". Width 19". Depth 33" at base tapering to 19" at top. This is designed to be the ideal housing for all first-class 3-speaker systems with 15" bass speaker, 8" middle speaker, and any type of tweeter.
- D.C.R. 15.0. Height 42". Width "Depth 30" at base tapering to 18" at top. This is the new label for the famous D.C.R. 60, primarily designed for the Tannoy 15" dual concentric unit.
- D.C.R. 12.8. Height 40". Width 17". Depth 27" at base tapering to 16" at top. Designed to provide the best housing for the popular combination of 12" and 8" speakers.
- D.C.R. 12.T. Height 40". Width 16". Depth 24" at base, tapering to 15" at top. This is a new model to accommodate any first class combination of a 12" speaker with a tweeter.
- D.C.R. 12.D. Height 40". Width 16". Depth 24" at base, tapering to 16" at top. Formerly the D.C.R. 61 cabinet, designed for the Tannoy 12" dual, it is recommended also for the Plessey, Whiteley and Lorenz 12" dual speakers, also for first-class single 12" units.
- D.C.R. 12 Minor. Height 36". Width 16". Depth 18" at base, tapering to 13" at top. Formerly known as D.C.R. 62, recommended for use with 12" speakers, where space or cost prevent the use of a larger cabinet. The best housing for smaller speakers, 10" or 8".

EMG

presents
 the extended range of
**DAVEY
 CORNER
 REFLECTOR
 SPEAKERS**



THE DAVEY CORNER REFLECTOR
SPEAKER CABINETS have clearly
 come to stay.

There are good reasons why they should.

DOMESTIC COMPATIBILITY

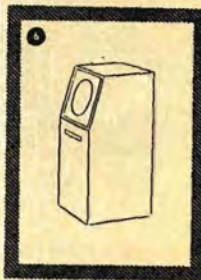
In appearance they are unobtrusive. No grinning speaker apertures, dazzling grilles, or horn-mouths are visible from any part of the room. Only plain well finished cabinet work is seen. They do not dominate the room. If you put a vase of flowers on one, it looks like a stand for a vase of flowers. They do not have to fit closely into a corner, and most corners will serve.

REALISTIC AND COMFORTABLE LISTENING

The reflection of the sound by the corners of the room disperses the apparent source of sound and also the high-note beam. "High-Fidelity" high-note response sounds neither aggressive nor tiring, but just natural. The music sounds up in the air and well spread out, just as it comes to you from a concert platform. There is also a strong illusion of depth or stereoscopic effect.

TECHNICAL EXCELLENCE

The bass response of the speaker is supported by an unique system of resistive loading pioneered by Mr. H. B. Davey five years ago. The bass is deeper, smoother and cleaner than is possible with other types of loading, since no resonant systems are employed. The cabinets are very stiffly constructed, and there is absolutely no "cabinet talk".



① D.C.R. 15.8.T. Height 45". Width 19". Depth 33" at base tapering to 19" at top. This is designed to be the ideal housing for all first-class 3-speaker systems with 15" bass speaker, 8" middle speaker, and any type of tweeter.

② D.C.R. 15.D. Height 42". Width 18". Depth 30" at base tapering to 18" at top. This is the new label for the famous D.C.R. 60, primarily designed for the Tannoy 15" dual concentric unit.

③ D.C.R. 12.8. Height 40". Width 17". Depth 27" at base tapering to 16" at top. Designed to provide the best housing for the popular combination of 12" and 8" speakers.

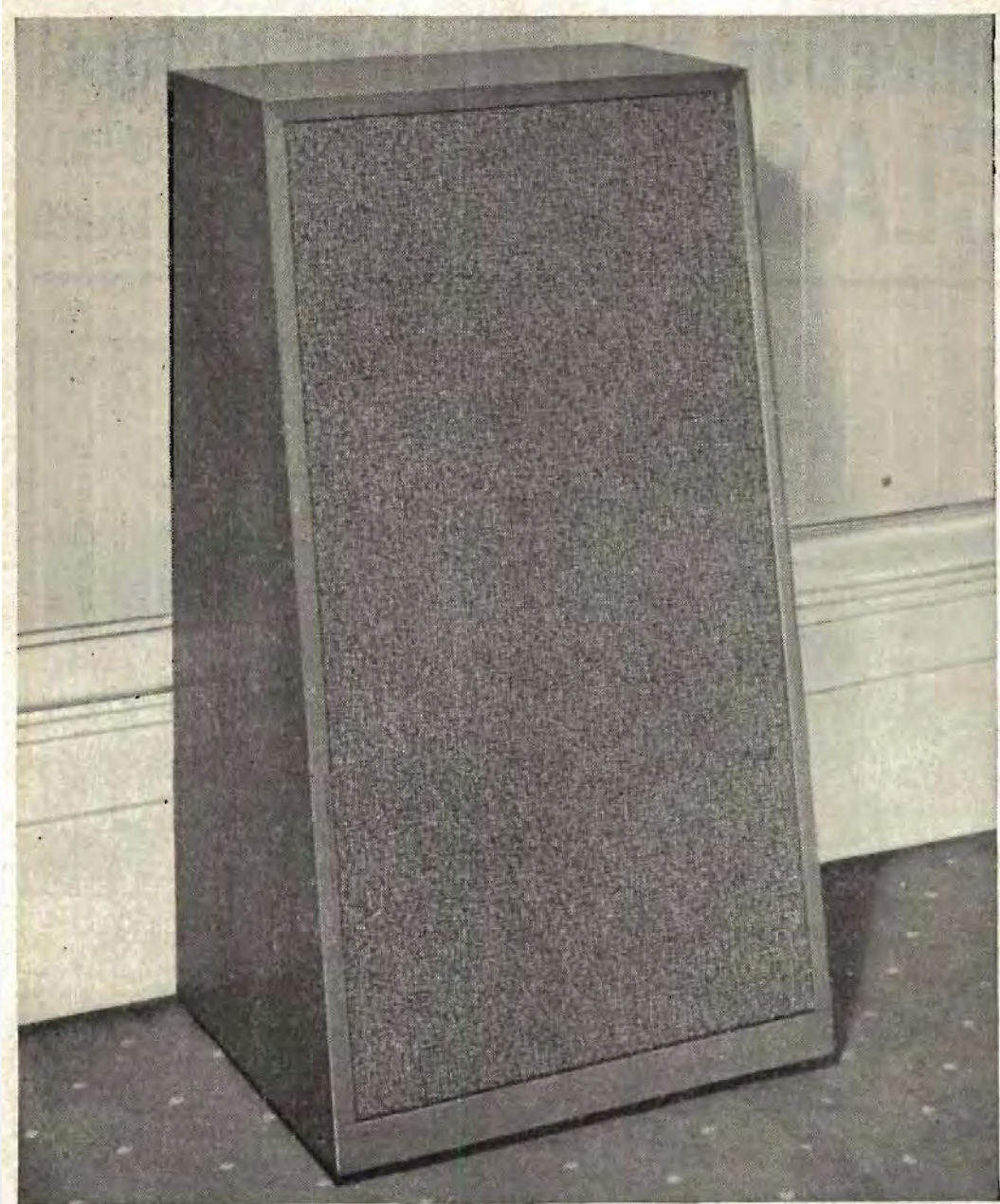
④ D.C.R. 12.T. Height 40". Width 16½". Depth 24" at base, tapering to 15" at top. This is a new model to accommodate any first-class combination of a 12" speaker with a tweeter.

⑤ D.C.R. 12.D. Height 40". Width 16". Depth 24" at base, tapering to 16" at top. Formerly the D.C.R. 61 cabinet, designed for the Tannoy 12" dual, it is recommended also for the Plessey, Whiteley and Lorenz 12" dual speakers, also for first-class single 12" units.

⑥ D.C.R. 12 Minor. Height 36". Width 16". Depth 18" at base, tapering to 13" at top. Formerly known as D.C.R. 62, recommended for use with 12" speakers, where space or cost prevent the use of a larger cabinet. The best housing for smaller speakers, 10" or 8".

EMG SPEAKERS 1965

D.L.12T speaker (Sept 1965). 36" x 20" x 16" tapering to 10" at top



EMG SPEAKERS April 1959 list

Loudspeaker Price List

Recommended Speaker Units

<u>Type of Cabinet</u>	<u>Price of Cabinet</u>	<u>Types of Speaker</u>	<u>Price complete with crossover</u>	<u>Cabinets with Speakers fitted</u>
D.C.R 15 8T	£45.0.0.	15" Tannoy 8" Kelly Ribbon Tweeter	£45.17.6.	£90.17.6.
D.C.R.15D	£40.0.0.	Tannoy 15" dual	£37.10.0.	£77.10.0.
		Colaudio 15" dual	35. 9.6.	75. 9.6.
D.C.R. 12.8.7.	£40.0.0.	12" Whiteley 8" Axiette Kelly Ribbon	£31.13.0.	£71.13.0.
D.C.R 12.3	£39.0.0.	12" Whiteley Super 3	£19.11.9.	£58.11.9.
D.C.R. 12.8	£38.0.0.	Various	-----	-----
D.C.R. 12 T	£36.0.0.	Various	-----	-----
D.C.R 12 D	£35.0.0.	Tannoy 12" dual	£30.15.0.	£65.15.0.

(all the above cabinets are supplied complete with casters)

D.C.R. 12 Minor	£27.0.0.	Grampian 12"	£ 9. 0.0.	£36.0. 0.
(without casters)				

Notes:

The cabinets when ordered without speaker units are supplied completely ready for use, with speaker plug and socket, and five yards of speech lead. They can be veneered in any finish to customer's choice.

The mention of recommended speaker systems does not imply that other types of speakers are unsuitable. There are many other good combinations which will be heard at their best in these cabinets.

Customers ordering cabinets may have their own speakers fitted to them in our Works without extra charge.

Baffle Speakers

26" x 28" Baffle with Whiteley 12" Speaker	£ 23.7.6.
22½" square Baffle with Wharfedale 10" Golden	£ 15.18.4.